

Chalkmark Testing 21/09/2006

This report is provided by ACC Risk Management Services
(ACC2006/86489)

Test Location:

Mills Terrace North Adelaide

Present:

Louis Palumbo, Assessor
Trevor Battersby, Assessor and Justice of the Peace
Sharon Prior, Observer
Glenn Taylor, Observer
Craig Hawkings, Observer
Lisa Loveday, Observer
Bob Weatherill, Parking & Information Officer
Rudi DeCock, Risk Management Services Auditor

Weather Conditions:

Dry weather

Cars involved:

White Holden Commodore Wagon – 205/65R15 tyres
Red Toyota Corolla – 195/60R15 tyres

Photo cameras:

3 digital cameras were used. Due to technical problems with the memory card, a few photos that were taken are lost.

Chalk used:

White, blue and yellow

Chalk Holders:

Extended holder and short holder

Operational structure of the tests:

Chalk marks are put on the tyre for each individual test, and before moving the car, using the three different colours of chalk and both the extended and the short holder for each chalk colour.

Both assessors check the mark for each case: before and after moving the car.

Photos of marks were taken before and after moving the car.

Tests undertaken to reflect situations as may occur in reality:

- Driving 5 meter in a straight line
- Move forward for 10 meters
- Move forward for 50 meters
- Move forward for 100 meters
- U-turn to other side of the road
- Angle park – out and in again
- Parallel park – out and in again
- Around the block (800 meters)

To be assessed by the assessors:

A) What does the chalk mark look like?

Chalk mark assessment after moving the car:

- 1) Clear (mark clearly visible)
- 2) Changed (mark smudged)
- 3) Not visible (mark totally disappeared)

B) What's the location of the chalk mark on the tyre at destination?



Extended Holder



Use of Extended
chalk holder



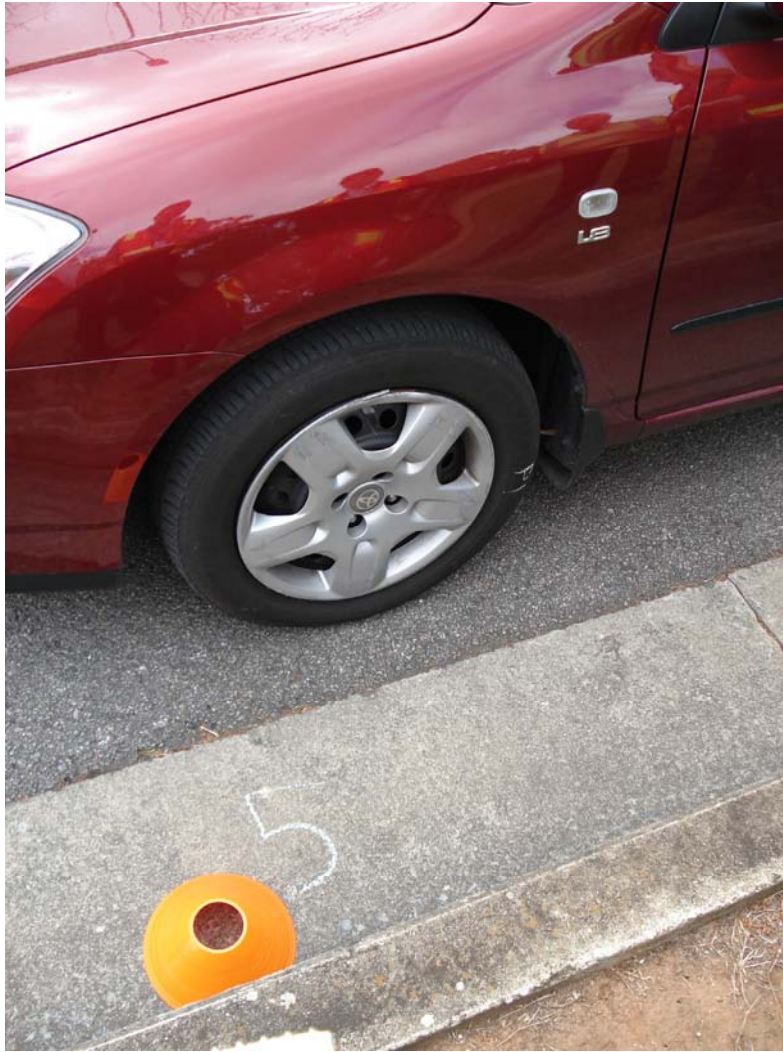
Short chalk holder



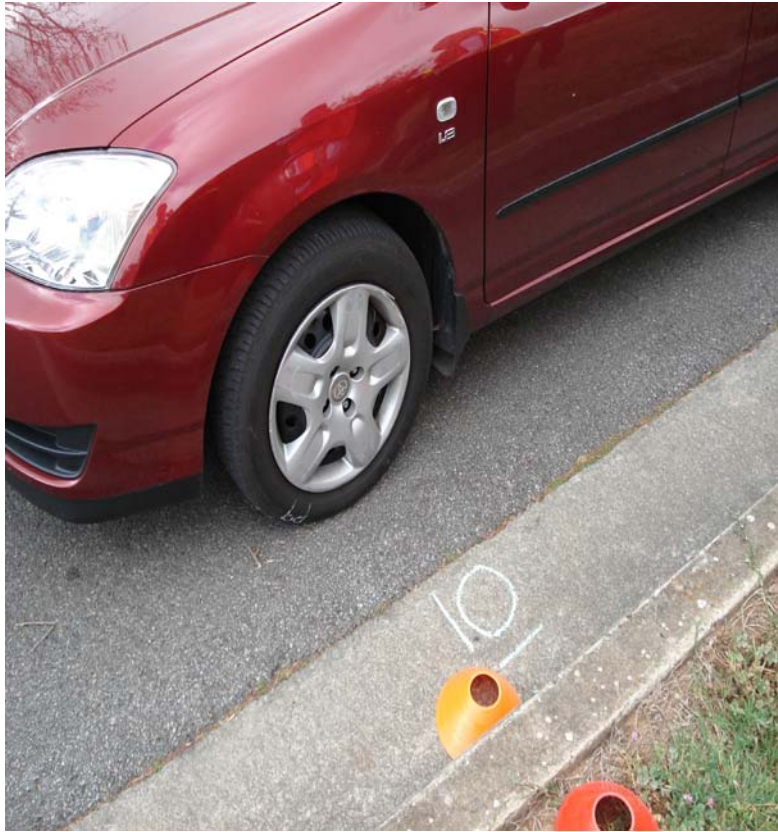
Use of short chalk holder



0 meter mark on street



5 meter mark on street



10 meter mark on street



50 meter mark on street



Angle parking position
Corolla



Angle parking position
Commodore



Left side tyre: white chalk,
blue chalk, yellow chalk put
on with extended chalk
holder

Right side tyre: white chalk,
blue chalk, yellow chalk put
on with short chalk holder

Each case number on tyre
(here 65)



Assessors checking chalk marks